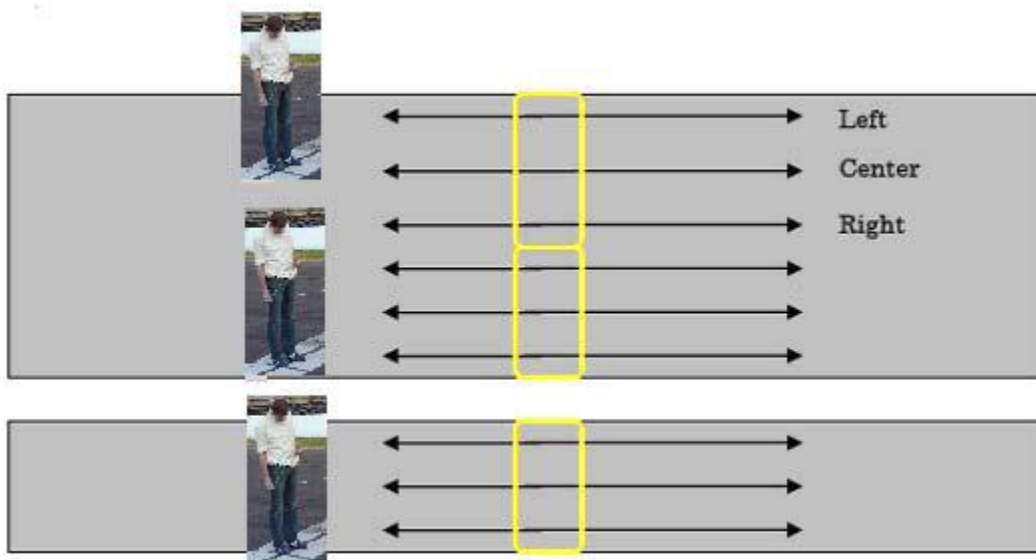


## Periodical check of the RC detection loop

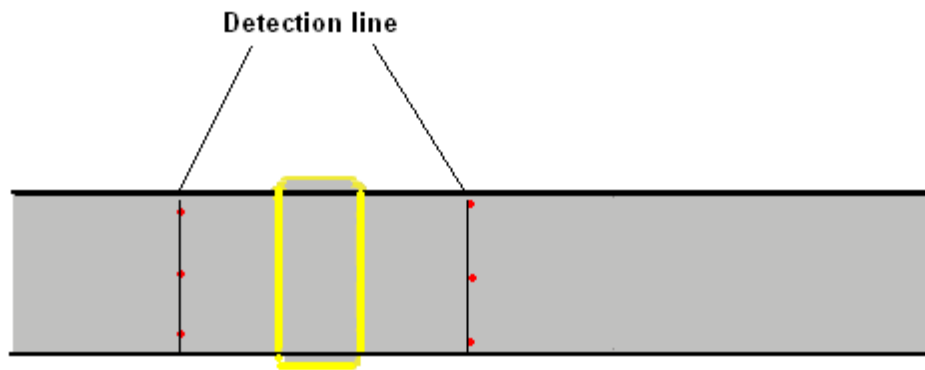
MYLAPS recommends testing the detection loop on a regular basis AND before every event.

- 1) Before starting:
  - A powered transponder is necessary to perform the test
  - The transponder should be positioned vertically about 10cm vertically above the track.
  - The distance between the transponder and the track should remain the same during the test.
  - Usually there should be 3 testing points on each side of the loop: Left end, center, and right end of the detection loop (see drawing)
  - If possible have the decoder next to the detection loop and have the headphone plugged into the decoder. If the decoder is far from the detection loop, 2 persons are required: one person that performs the test, another next to the decoder in communication with the testing person.
- 2) How to proceed (see picture):
  - a) Place the transponder vertically and start the test about 7m (20ft) from the detection loop. Slowly move the transponder towards the detection loop. Make sure the distance between the transponder and the track remain the same.
  - b) As soon as the decoder emits a beep stop and mark the position on the track
  - c) Return 7m (20ft) from the detection loop and repeat a and b at the center, left and right of all detection loops.
  - d) Repeat a, b and c on the other side of the detection loop.



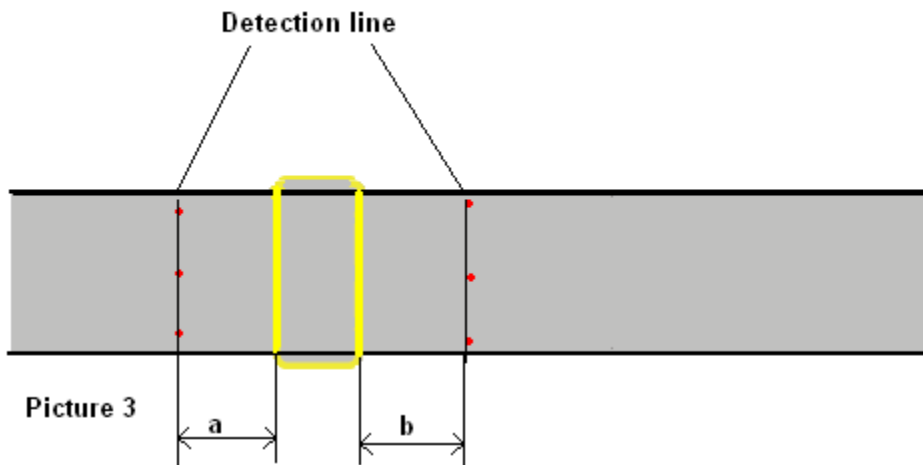
picture 1

- e) The line between the marked positions on the track is called "*detection line*". The detection line should be straight (see picture 2)



Picture 2

- f) The distance *a* and *b* between the detection line and the loop wire should be the same on both sides of the detection loop (see Picture 3)



Picture 3